



BDCP

BAY DELTA CONSERVATION PLAN

The Bay Delta Conservation Plan

KARLA NEMETH, Resources Agency
DAVE HARLOW, State Water Contractors

Lower Yolo Bypass Planning Forum

December 9, 2008



Today's Presentation

- About the BDCP
 - Who, What & How
 - Activities to date
- Draft conservation strategy
 - Habitat restoration, water operations & conveyance facilities, and ways to reduce other stressors
 - North Delta – ideas developed to date applicable to the Lower Yolo Bypass
- Where we go from here
 - Draft schedule
 - Additional analysis
 - Public input

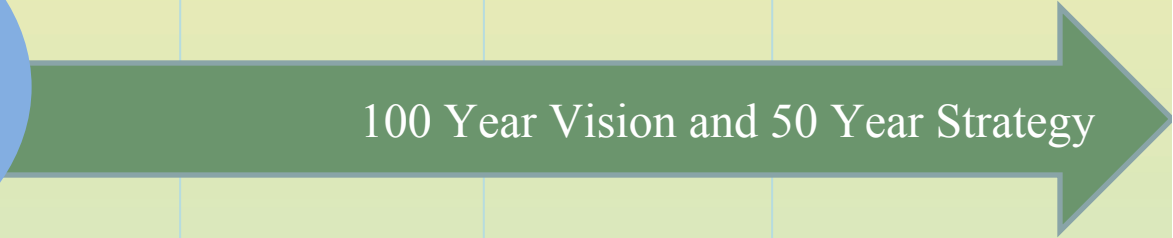
BDCP and Related Planning Efforts

2008—2010	2010—2015	2015—2060	To 2110+
-----------	-----------	-----------	----------

Delta Vision
Independent Commission

Land use, groundwater management, water conservation, recreation, governance, flood protection

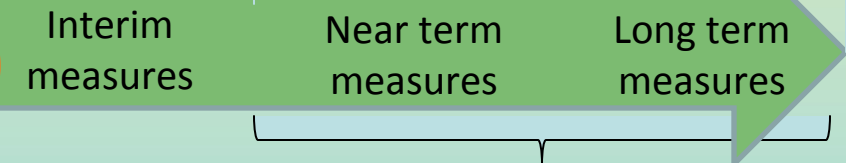
Water supply
Ecosystem restoration



BDCP
Stakeholder collaboration

- Conservation plan with regulatory outcome

Water supply
Ecosystem restoration



CALFED
Data informing Delta Vision and BDCP

DRMS

Federal efforts: ESA Recovery Plans
Other efforts: SWRCB

What will the BDCP do?

BDCP Will:

- Provide comprehensive conservation / restoration
- Provide basis for permits
- Identify sources of funding
- Adapt as conditions change
- Streamline permitting

BDCP Will Not:

- Solve all environmental challenges in the Delta
- Address all the stressors that may affect Covered Species (such as ocean conditions)
- Eliminate other permitting requirements
- Affect authority of existing land use jurisdictions

BDCP Steering Committee

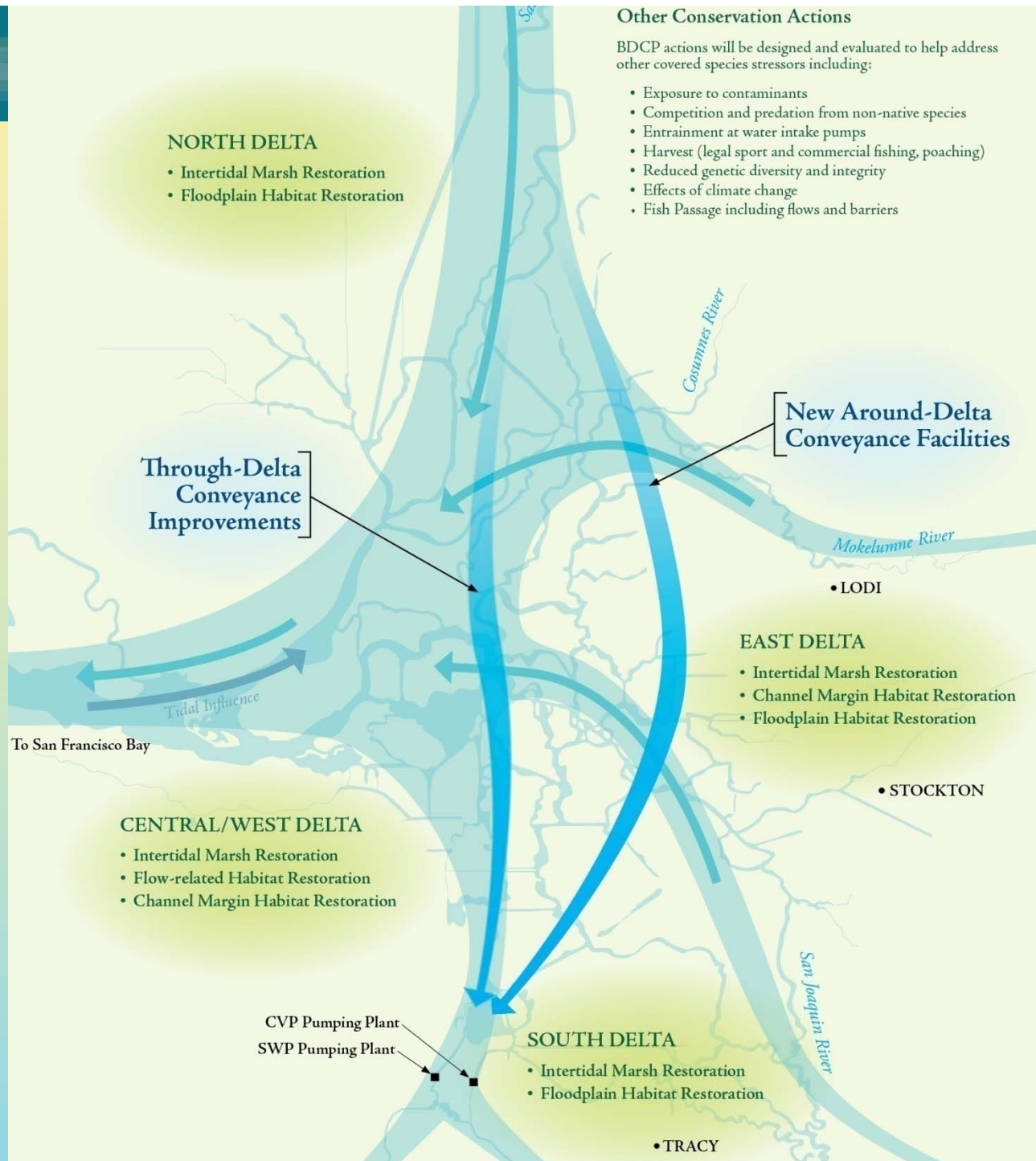
- Department of Water Resources
- Bureau of Reclamation
- Santa Clara Valley Water District
- Kern County Water Agency
- Metropolitan Water District of Southern California
- San Luis & Delta-Mendota Water Authority
- Mirant Energy
- Westlands Water District
- Zone 7 Water Agency

- American Rivers
- Defenders of Wildlife
- Environmental Defense Fund
- Natural Heritage Institute
- The Bay Institute
- The Nature Conservancy



- US Fish and Wildlife Service*
- CA Department of Fish and Game*
- National Marine Fisheries Service*
- *Ex Officio status

- North Delta Water Agency
- California Farm Bureau Federation
- California Resources Agency
- Contra Costa Water District
- Friant Water Authority



Biological Goals & Objectives

- Splittail spawning and rearing habitat
- Salmonid rearing habitat
- Food production and food/nutrient export to downstream habitats
- Improved upstream passage for salmonids and sturgeon
- Restored habitats for other floodplain- and intertidal marsh-associated species

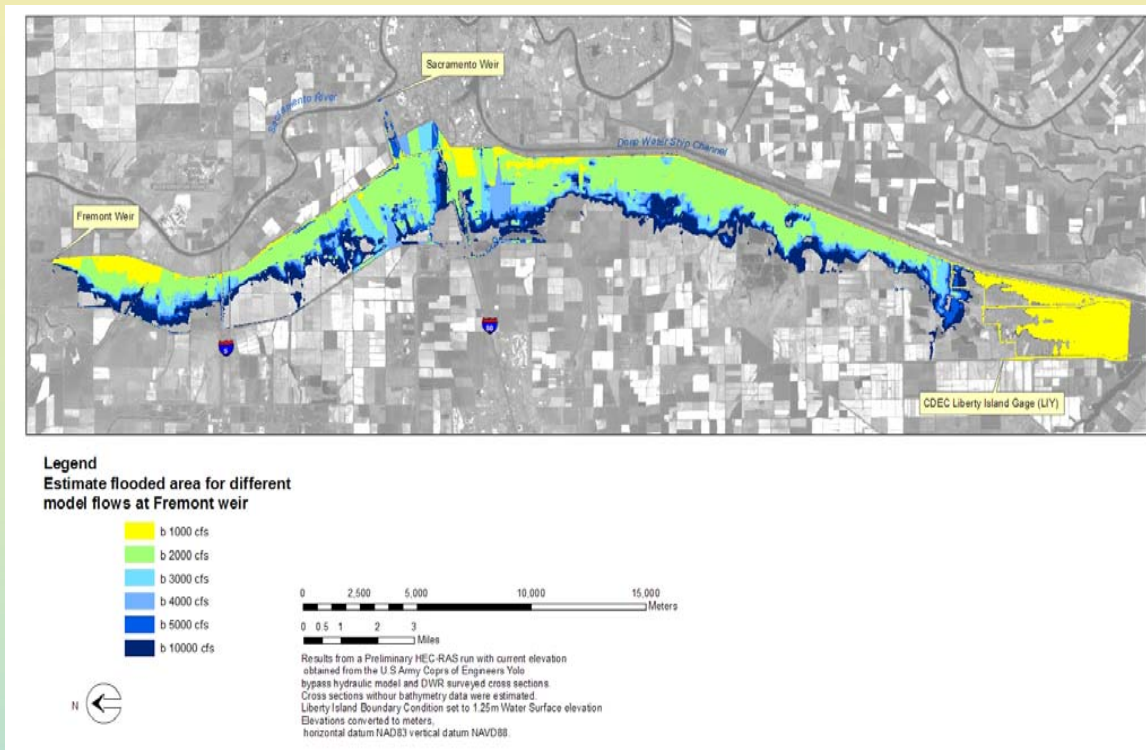
Conservation Measures as they relate to Lower Yolo Bypass Planning Forum

Habitat Restoration (and related Water Operations Conservation Measures)

- Floodplain Habitat Restoration
 - Modify Fremont Weir Operations and Yolo Bypass to provide for higher frequency and duration of inundation
 - Create and operate a new flood bypass in the Yolo Bypass/Cache Slough Complex ROA to restore seasonally inundated floodplain habitat

- Freshwater Intertidal Marsh Habitat Restoration
 - Freshwater Intertidal marsh, shallow subtidal aquatic, and transitional grassland habitat within Yolo Bypass/Cache Slough

Yolo Bypass Inundation Scenarios



Evaluated scenarios would inundate less than 1/3 of Bypass for 30-45 days in late winter/spring

Scenarios represent coarse level feasibility without the benefit of local input

Implementation Considerations Yolo Bypass Inundation

- Flood control – Corps of Engineers
- Impacts to existing land use
 - Agricultural activities & upland forage value
 - Hunting
 - School programs, wildlife viewing
- Financial impacts to county tax base and refuge income
- Methylmercury
- Vector control
- Wildlife

Conservation Measures as they relate to Lower Yolo Bypass Planning Forum

Habitat Restoration (and related Water Operations Conservation Measures)

- Channel Margin Habitat Restoration
 - Support development and implementation of levee construction and maintenance designs that incorporate aquatic, intertidal marsh, and riparian habitat features
 - Provide for the establishment of native riparian woody vegetation and emergent vegetation of BDCP constructed levees

- Riparian Habitat Restoration
 - Restore riparian forest and scrub communities as a component of restoration efforts listed above

Conservation Measures as they relate to Lower Yolo Bypass Planning Forum

Other Stressor Conservation Measures

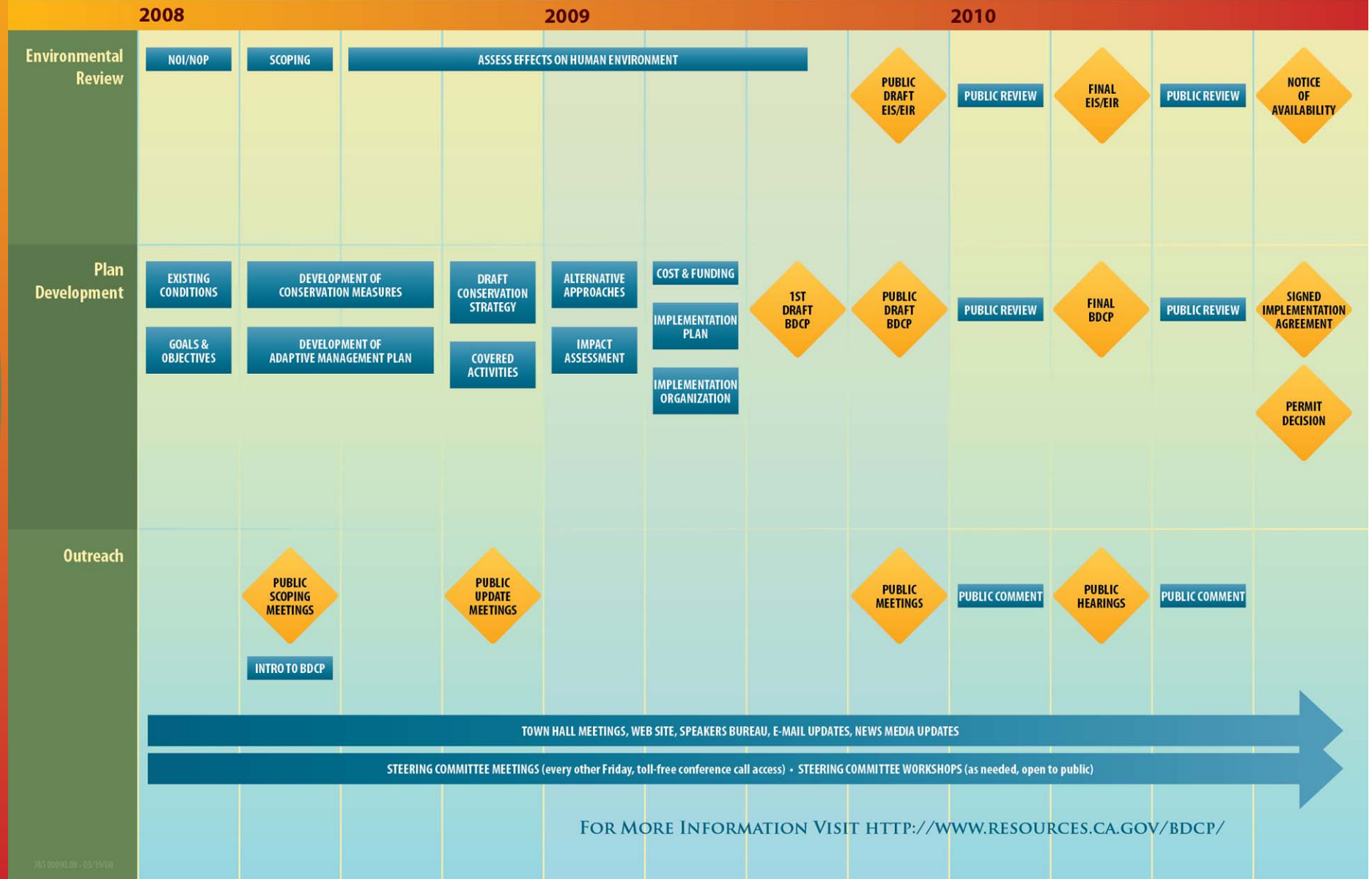
- Non-Native Invasive Species
 - Remove non-native submerged and floating aquatic vegetation from Delta waterways
 - Increase the harvest of non-native predatory fish to decrease their abundance
- Toxic Contaminants
 - Reduce load of methylmercury entering Delta waterways
 - Reduce load of pesticides and herbicides entering Delta waterways from in-Delta sources that are believed to be toxic to covered fish species
- Other Water Quality Issues
 - Improve quality of water discharged from managed seasonal wetlands into Suisun bay and Delta waterways to prevent dissolved oxygen sags

Conservation Measures as they relate to Lower Yolo Bypass Planning Forum

Other Stressor Conservation Measures

- Harvest
 - Reduce illegal harvest of Chinook salmon, central valley steelhead, green sturgeon, and white sturgeon in the Delta
- Non-Project Diversions
 - Screen, remove, relocate, consolidate, modify and/or alter timing of non-project diversions to reduce entrainment of covered fish species within Delta
- Commercial /Recreational Activities
 - Establish no-wake boating zones in Delta waterways to protect sensitive covered species shoreline habitat

Schedule Overview



Thank You.
Questions?

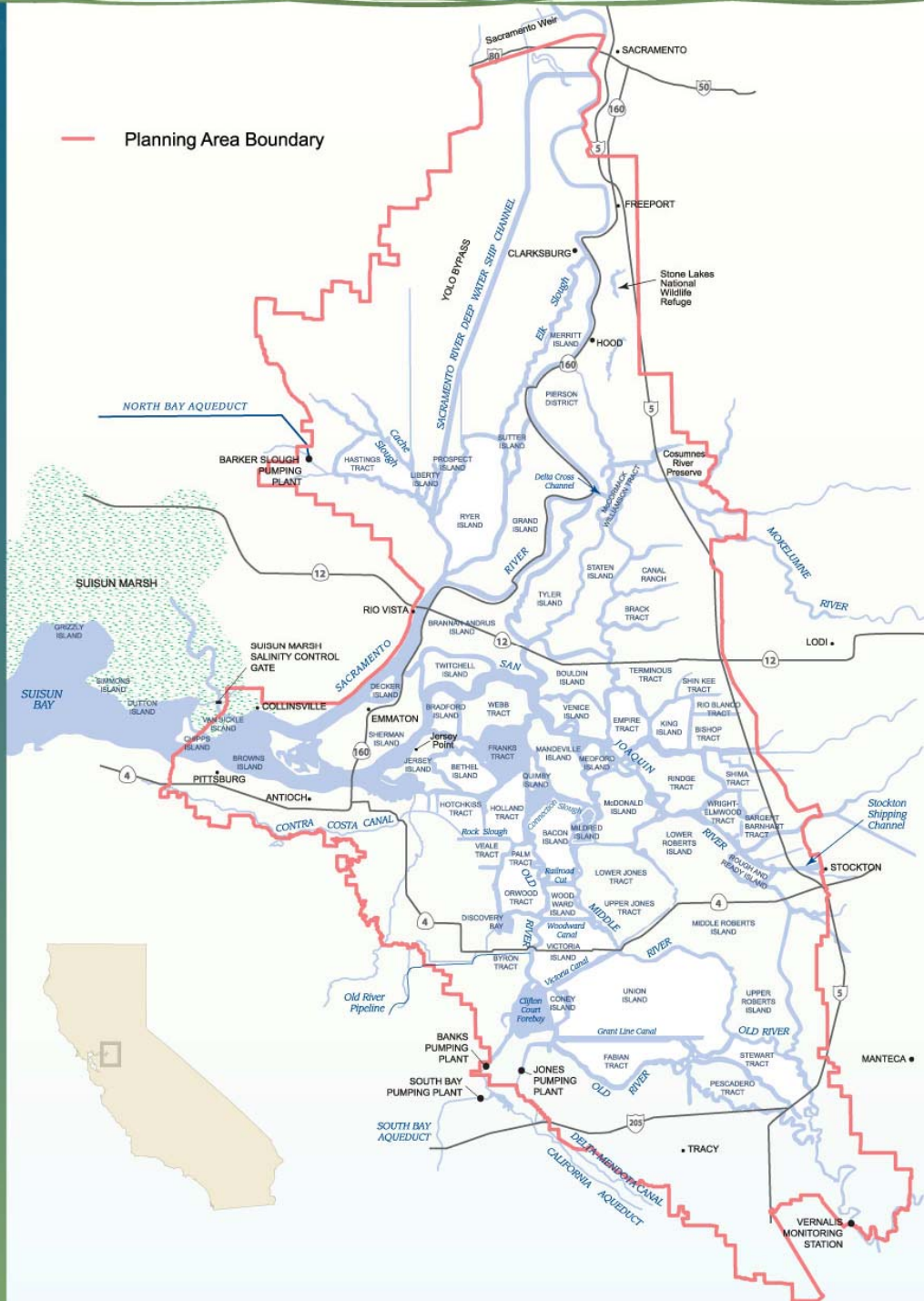
Karla Nemeth

Resources Agency – BDCP Liaison

karla.nemeth@resources.ca.gov

www.resources.ca.gov/bdcp

— Planning Area Boundary



Covered Species

- Delta smelt
- Longfin smelt
- Chinook salmon (winter, spring, fall and late fall)
- Green and white sturgeon
- Central valley steelhead
- Sacramento splittail



Covered Activities

- Water deliveries, conveyance elements, operational activities, maintenance and facility improvements of the SWP and CVP
- Operational activities related to water transfers involving water contractors or to serve environmental programs
- Ongoing operation of, and recurrent and future projects related to, other Delta users including Mirant Delta
- Conservation measures included in the BDCP, including adaptive habitat management, restoration, enhancement and monitoring activities

