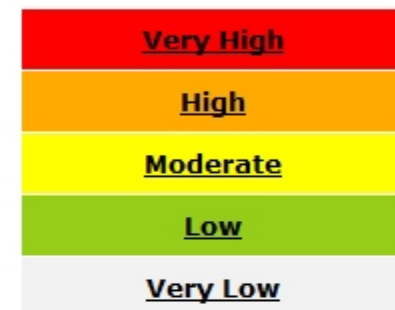
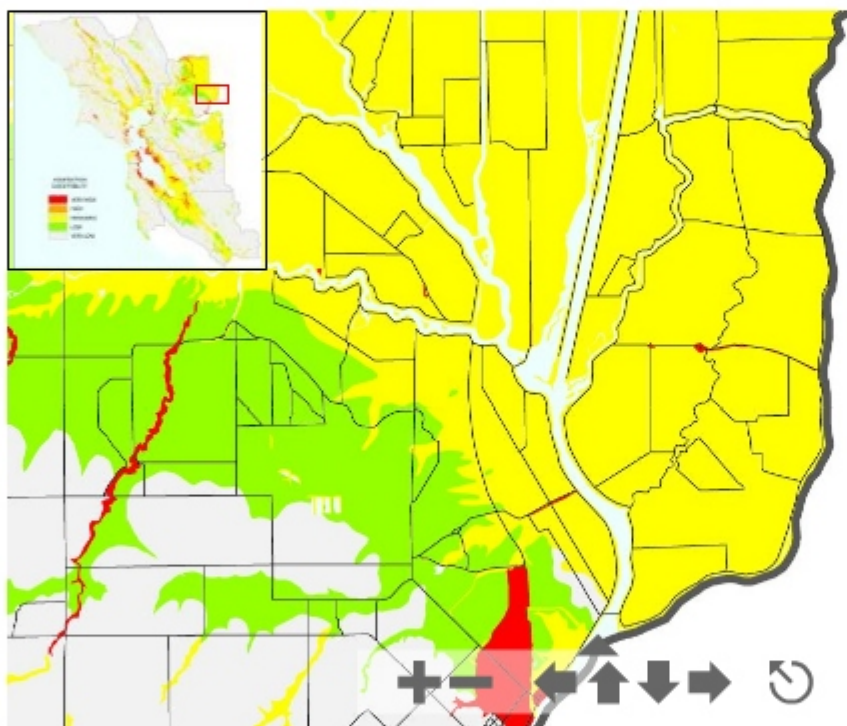


Maps > **Susceptibility Map**

A cooperative project with the California Geological Survey

Susceptibility Map of the San Francisco Bay Area

(Note: The following map below requires the Shockwave player to view. You can [download the Shockwave player here](#).



How to use the online map:

Use the + and - buttons to zoom in and out

Slide the triangle to zoom in and out

Click and drag on the map to slide the map

Click and drag the red rectangle in the inset map to quickly slide the map

Use the arrow buttons to slide the map in one direction

Click the circled-arrow to return to the whole-map view

Roughly one quarter of the San Francisco Bay region may be exposed to liquefaction with the [shaking that has been forecast](#). The area mapped in the Very High, High and Moderate categories makes up about 25% of the 9-county region. Some of the most hazardous areas are beneath our urban core!

The liquefaction susceptibility mapping is based on assessments of the potential for liquefaction in each Quaternary geologic map unit and applied across the entire area. More detailed evaluation (for example, for one's house or a particular site) requires more detailed information, such as geotechnical borings. This would apply, for example, to areas of artificial fill around the Bay margins, where many fills are old and poorly engineered, but others are not.

Map compiled from Knudsen and others, 2000, and Witter and others, 2005 ([see how the map was made](#)).