

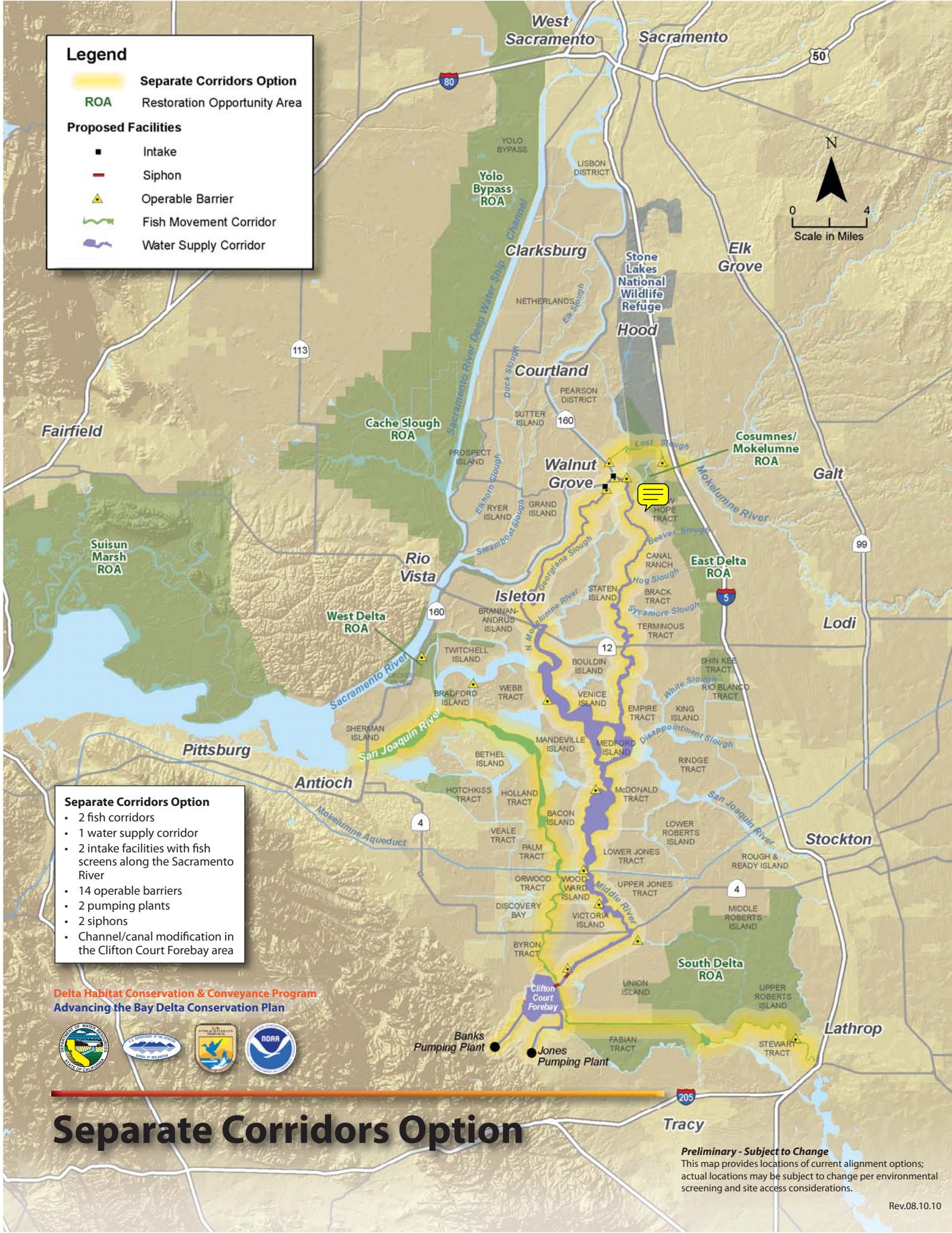


## Legend

-  **Separate Corridors Option**
-  **ROA** Restoration Opportunity Area
- Proposed Facilities**
-  Intake
-  Siphon
-  Operable Barrier
-  Fish Movement Corridor
-  Water Supply Corridor



### Separate Corridors Option

- 2 fish corridors
- 1 water supply corridor
- 2 intake facilities with fish screens along the Sacramento River
- 14 operable barriers
- 2 pumping plants
- 2 siphons
- Channel/canal modification in the Clifton Court Forebay area

**Delta Habitat Conservation & Conveyance Program**  
**Advancing the Bay Delta Conservation Plan**



# Separate Corridors Option

**Preliminary - Subject to Change**

This map provides locations of current alignment options; actual locations may be subject to change per environmental screening and site access considerations.