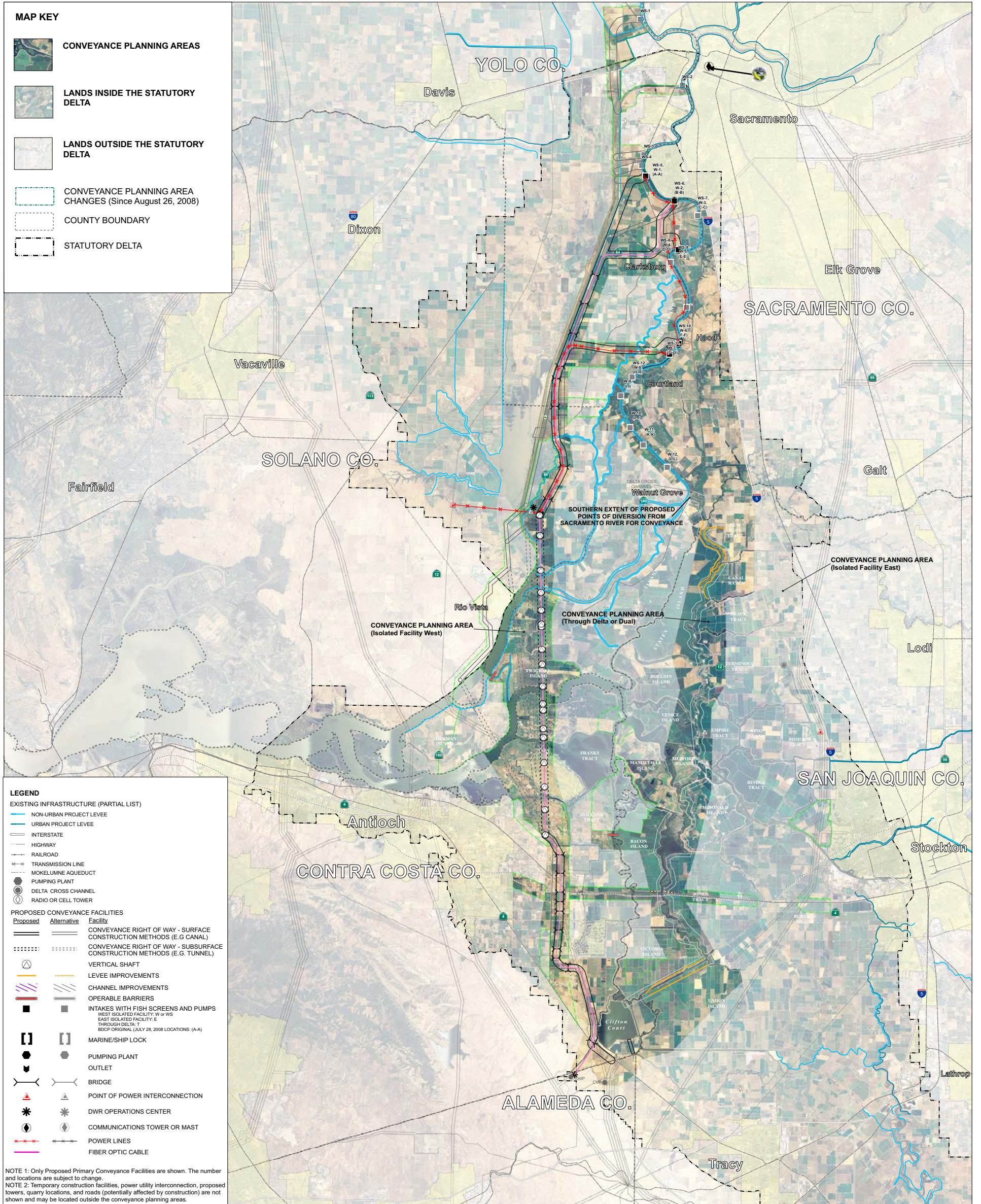


# BAY DELTA CONSERVATION PLAN (BDCP)

## CONCEPT-LEVEL CONVEYANCE PLANNING AREA

### WITH PROPOSED CONVEYANCE OPTIONS: *DUAL CONVEYANCE - WEST*

#### FIRST UPDATE (March 2009)



**MAP KEY**

- CONVEYANCE PLANNING AREAS
- LANDS INSIDE THE STATUTORY DELTA
- LANDS OUTSIDE THE STATUTORY DELTA
- CONVEYANCE PLANNING AREA CHANGES (Since August 26, 2008)
- COUNTY BOUNDARY
- STATUTORY DELTA

**LEGEND**

**EXISTING INFRASTRUCTURE (PARTIAL LIST)**

- NON-URBAN PROJECT LEVEE
- URBAN PROJECT LEVEE
- INTERSTATE
- HIGHWAY
- RAILROAD
- TRANSMISSION LINE
- MOKELUMNE AQUEDUCT
- PUMPING PLANT
- DELTA CROSS CHANNEL
- RADIO OR CELL TOWER

**PROPOSED CONVEYANCE FACILITIES**

Proposed	Alternative	Facility
		CONVEYANCE RIGHT OF WAY - SURFACE CONSTRUCTION METHODS (E.G CANAL)
		CONVEYANCE RIGHT OF WAY - SUBSURFACE CONSTRUCTION METHODS (E.G. TUNNEL)
		VERTICAL SHAFT
		LEVEE IMPROVEMENTS
		CHANNEL IMPROVEMENTS
		OPERABLE BARRIERS
		INTAKES WITH FISH SCREENS AND PUMPS WEST ISOLATED FACILITY: W or WS EAST ISOLATED FACILITY: E THROUGH DELTA: T BDGP ORIGINAL (JULY 28, 2008 LOCATIONS: (A-A))
		MARINE/SHIP LOCK
		PUMPING PLANT
		OUTLET
		BRIDGE
		POINT OF POWER INTERCONNECTION
		DWR OPERATIONS CENTER
		COMMUNICATIONS TOWER OR MAST
		POWER LINES
		FIBER OPTIC CABLE

NOTE 1: Only Proposed Primary Conveyance Facilities are shown. The number and locations are subject to change.  
 NOTE 2: Temporary construction facilities, power utility interconnection, proposed towers, quarry locations, and roads (potentially affected by construction) are not shown and may be located outside the conveyance planning areas.

DEPARTMENT OF WATER RESOURCES (DHCCP)  
 UNITED STATES BUREAU OF RECLAMATION  
 UNITED STATES FISH AND WILDLIFE SERVICE  
 NOAA NATIONAL MARINE FISHERIES SERVICE



**Data Sources:**  
 -Restoration Opportunity Areas: BDCP (September 23, 2008)  
 -Conveyance Planning Areas: DHCCP (March 2009)  
 -Conveyance Alignment Options: DHCCP (March 2009)  
 -Intake Locations: BDCP (July 8, 2008)  
 -Aerial Photography: NAIP 2005

