

1850 1855 1860 1865 1870 1875 1880 1885 1890 1895 1900 1905 1910 1915 1920 1925 1930

▲ Gold Discovered (1848)

▲ Hydraulic Mining underway (1856)

◆ Hydraulic Mining underway (1856)

● Major Flood (1862)

● Major Flood (1867)



Gold Mining



Hydraulic Mining

● Major Flood (1881)

● Sawyer Decision rendered (1884)

● Major Flood (1890)

● California Debris Commission established (1893)

▲ Congress authorizes Yuba River debris control works (1896)

▲ Congress reauthorizes Yuba River debris control works (1902)

● Major Flood (1904)

● Major Flood (1907)

● Major Flood (1909)

Congress authorizes the Jackson Report (1910)

● Major Flood (1911)

The State Reclamation Board is established (1911)

Reclamation Board given control of "pre-project" levees on Central Valley Streams (1913)

▲ Debris Commission begins dredging Sacramento River (1913)

Sacramento River Flood Control Project authorized by Flood Control Act of 1917

Sacramento Weir completed on the Sacramento River (1918)



Sacramento Weir

▲ Fremont Weir completed on the Sacramento River (1924)

● Major Flood (1928)



Flooding in Downtown Sacramento



Back to Text

- All Basins
- ▲ Sacramento River Basin
- ◆ San Joaquin River Basin
- Tulare Lake Basin

POST FLOOD ASSESSMENT FOR
1983, 1986, 1995, and 1997

FIGURE 2-1
CENTRAL VALLEY
FLOOD MANAGEMENT TIMELINE
1850 - 1930

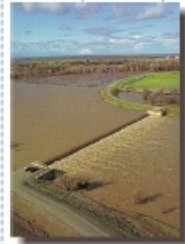
US Army Corps of Engineers
Sacramento District

March 1999

1850 1855 1860 1865 1870 1875 1880 1885 1890 1895 1900 1905 1910 1915 1920 1925 1930

1930 1935 1935 1940 1945 1950

- ▲ Moulton Weir completed on the Sacramento River (1932)
- ▲ Tisdale Weir completed on the Sacramento River (1932)
- ▲ Colusa Weir completed on the Sacramento River (1933)
- Central Valley Project authorized (1933)
- ▲ Sacramento River dredging completed from Cache slough to mouth (1934)



Moulton Weir

- ▲ Congress authorizes Narrows Dam for mining debris (1935)
- ▲ Congress authorizes North Fork Dam for mining debris (1935)
- ▲ Yuba River debris control works completed (1935)
- ▲ North Fork Dam completed on North Fork American River (1939)



North Fork Dam



Narrows Dam

- ▲ Narrows Dam completed on the Yuba River (1941)
- ▲ Flood Control Act of 1944 assigns duty of flood control and navigation to the U.S. Army Corps of Engineers
- Sacramento River and Major & Minor Tributaries Project authorized by Flood Control Act of 1944

- ▲ Shasta Dam completed during war for interim operation (1945)
- ▲ Shasta Dam completed for full operation on the Sacramento River (1949)
- ◆ Friant Dam completed on the San Joaquin River (1949)



Friant Dam



Shasta Dam

- All Basins
- ▲ Sacramento River Basin
- ◆ San Joaquin River Basin
- Tulare Lake Basin

POST FLOOD ASSESSMENT FOR
1983, 1986, 1995, and 1997

**FIGURE 2-1
CENTRAL VALLEY
FLOOD MANAGEMENT TIMELINE
1930 - 1950**

US Army Corps of Engineers
Sacramento District

March 1999

1930 1935 1935 1940 1945 1950

1950 1955 1960 1965

- Isabella Dam completed on the Kern River (1953)
- Pine Flat Dam completed on the Kings River (1954)
- ▲ Congress authorizes construction of levee on north bank of the American River (1954)
- ◆ Legislature authorizes levees, bypasses on the San Joaquin River above Merced River (1955)
- **Major Flood (1955)**
- ▲ Folsom Dam completed on the American River (1956)
- ◆ Construction initiated on Lower San Joaquin River and Tributaries Project (1956)
- ▲ Levee on north bank American River completed (1958)

- State Water Project authorized (1960)
- ▲ Congress authorizes Sacramento River Bank Protection Project (1960)
- ▲ Sacramento River Flood Control Project substantially completed (1961)
- Success Dam completed on the Tule river (1961)
- Terminus Dam completed on the Kaweah River (1961)
- ▲ Black Butte Dam completed on Stony Creek (1963)
- ◆ Camanche Dam completed on the Mokelumne River (1963)
- ◆ New Hogan Dam completed on the Calaveras River (1964)
- **Major Flood (1964)**

- All Basins
- ▲ Sacramento River Basin
- ◆ San Joaquin River Basin
- Tulare Lake Basin



Pine Flat Dam



Folsom Dam



Success Dam



New Hogan Dam



Black Butte Dam

POST FLOOD ASSESSMENT FOR
1983, 1986, 1995, and 1997

FIGURE 2-1
CENTRAL VALLEY
FLOOD MANAGEMENT TIMELINE
1950 - 1965

US Army Corps of Engineers
Sacramento District

March 1999

1950 1955 1960 1965

1965 1970 1975 1980 1985 1990 1995 2000

▲ Portions of Sacramento River and Major & Minor Tributaries Project completed (1965)

● Major Flood (1967)

◆ New Exchequer Dam completed on the Merced River (1967)

▲ Oroville Dam completed on the Feather River (1968)

◆ Lower San Joaquin River and Tributaries Project levees constructed (1968)

● Major Flood (1969)

▲ New Bullards Bar Dam completed on the Yuba River (1970)

◆ Don Pedro Dam completed on the Tuolumne River (1970)

▲ Major Flood (1970)

◆ Lower San Joaquin River and Tributaries Project completed (1972)

▲ Major Flood (1974)

◆ Hidden Dam completed on the Fresno River (1975)

◆ Buchanan Dam completed on the Chowchilla River (1975)

▲ Indian Valley Dam completed on Cache Creek (1976)

◆ New Melones Dam completed on the Stanislaus River (1978)

● Major Flood (1983)

● Major Flood (1986)

▲ Cache Creek Basin Project completed (1993)

◆ Redbank and Fancher Creeks Project (1993)

● All Basins

▲ Sacramento River Basin

◆ San Joaquin River Basin

■ Tulare Lake Basin

● Major Flood (1995)

▲ Sacramento River Bank Protection Project completed (1996)

● Major Flood (1997)

● Major Flood (1998)



New Exchequer Dam



Don Pedro Dam



New Melones Dam



Levee Break - Flood of '97



POST FLOOD ASSESSMENT FOR
1983, 1986, 1995, and 1997

FIGURE 2-1
CENTRAL VALLEY
FLOOD MANAGEMENT TIMELINE
1965 - Present

US Army Corps of Engineers
Sacramento District

March 1999

1965 1970 1975 1980 1985 1990 1995 2000